

2024 Clifton Hill Field Trip

Helpful Hints

Drop-Off and Bus Parking



View map to see exactly the best spots for your drivers to drop off your groups. The green dot is the best spot to drop off. Please note this is not a parking spot but a drop off spot. Free bus parking is available in our parking lot behind the Niagara SkyWheel

Where do you pick up your tickets?



Packages and Niagara SkyWheel

If you are picking up for our Group Packages (Student Group Package, Ultimate Group Choice Package, Deluxe Group Choice Package or Group Choice Package) or Niagara SkyWheel tickets, your group can pick them up at the Niagara SkyWheel booth. ***Please allow some extra time to process passes/tickets for large groups. This is a good time to organize your group into smaller groups while waiting or providing group instructions.***

Individual Attractions

Attractions: Dinosaur Adventure Golf, Wizards Golf, Niagara Speedway (all guests must be present at ticket pick up for this attraction), Zombie Attack, Movieland Wax Museum, Toy Store 4D, Carnival Chaos, and Ghost Blasters Dark Ride, please **Pick-Up** your tickets right at the individual attraction's location.

Planning your Day (Scheduling & Timing)

Make sure you take the necessary steps to plan out your day accordingly to how you want your groups to complete their day. It is important to note that breaking into small groups is the best way to complete the Clifton Hill packages. This package will provide all the information you will need for a fun and time friendly day on Clifton Hill. This guide will help you plan your day depending on the attraction or package you are taking part in.

Packages including lunch at Wendy's or Hotdog concessions

Your lunch ticket includes lunch at Wendy's or our Hotdog Concession stand.



Breaking your class into smaller groups and going for lunch at their leisure is the best way to have lunch.

Please note that the busiest times for lunch at Wendy's is between **12pm-1:30 pm**.

To try and ensure a timely lunch, please aim for periods before and after this high-volume period.



Packages including Boston Pizza Buffet (*end of year special – June 10th – 14th/June 17th – 21st/June 24th – 26th only)

Your lunch ticket includes an all-you-can-eat student lunch buffet at Boston Pizza Clifton Hill. The buffet hours are specifically from **11:30 am – 1:00 pm** (no assigned seating). To avoid congestion at the buffet lines, we recommend splitting your class into groups at 30 minute intervals (ie. 30 students at 11:30 am, 30 at 12:00 noon, and 30 at 12:30 pm). This will allow more efficiency for time and activities and keep everyone on schedule.



High and Low Attraction Capacity

Low Capacity Attractions (has limitations for each show or ride):	High Capacity Attractions (can handle large amounts of people at any given time):
<p>Toy Store 4D Each 5-7-minute show has 18 seats.</p>	<p>Niagara SkyWheel Can fit 315 people every 15 minutes.</p>
<p>Zombie Attack Each 5-7-minute show has 36 seats</p>	<p>Movieland Wax Museum Walk-through attraction.</p>
<p>Ghost Blasters Dark Ride Each 3-5-minute ride has 2 people – 6 karts total.</p>	<p>Dinosaur Adventure Golf 2-sets of 18 holes mini putt courses.</p>
<p>Wizards Golf 1 set of 18 holes mini putt course.</p>	<p>Niagara Speedway Each 5-minute race runs 36-karts.</p>
<p>Carnival Chaos Each 5-7 minute ride has 5 carts (4 seats per cart)</p>	

Boston Pizza Reservations

Any Boston Pizza reservations enter through main entrance of Boston Pizza located right next to the Niagara SkyWheel.



Preparing a Central Meeting Location

It is always best to have a central meeting location for groups to come together or to meet in case of emergencies. The top 3 locations for these are:

- 1) Courtyard Area in front of Niagara SkyWheel
- 2) Courtyard Area by the Niagara Speedway
- 3) In front of the Great Canadian Midway.



Package & Attraction Length

Packages:

Package	Timing (Approximate)
Group Choice Package	2.5 hours
Deluxe Group Choice Package	3 hours
Ultimate Group Choice Package	3.5 hours

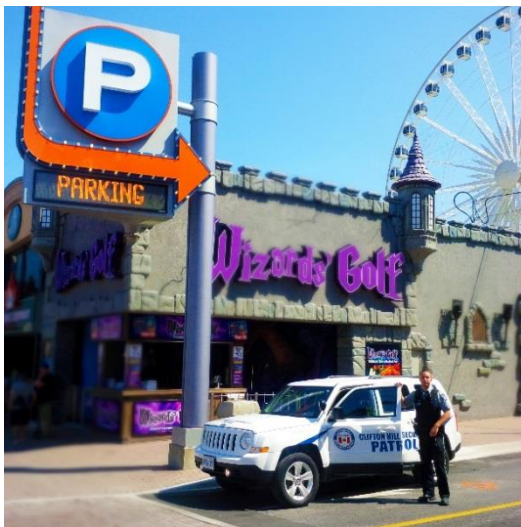
*Please note that these are approximate times based on volumes at attractions.

**Choice Packages timing will depend on which attractions are chosen to be completed.

Individual Attractions:

Attraction	Timing (Approximate)
Niagara SkyWheel	Between 20-30 minutes
Movieland Wax Museum	30-40 minutes
Dinosaur Adventure Golf (2-18 Hole Courses)	1 hour
Wizards Golf	1.5 hours
Zombie Attack	7-10 minutes
Toy Store 4D	5-7 minutes
Ghost Blasters Dark Ride	5-7 minutes
Carnival Chaos	5-7 minutes
Niagara Speedway	5 minute race

*Please note that these are approximate times based on volumes at attractions.



24-Hour On-Site Security

Safety is our number one concern for your groups. For this reason, we have 24-hour, 7-days a week security services for emergency and medical support. Know your groups are well taken care of when they are on our property. If you are in need of assistance during your visit, please make your way to the nearest location with an employee and ask for assistance.

Here is a look at what our security will be wearing.

Insurance and Safety Information

Looking to make your trip as safe as possible. We would be more than happy to assist you by providing you with the necessary insurance along with all the TSSA regulations for each attraction.

Curriculum Guides

Every field trip should be fun and educational, for access to our Curriculum Guide, [click here](#).

Hours of Operation

Visit: www.cliftonhill.com/info/hours

Need Information

Email: groups@cliftonhill.com

Phone: 1-800-801-8557

Open 7-days a week, 9:00am-5:00pm.